

December 2017

www.qcemmaus.org

Upcoming Gatherings: TBD— Please check the website for the latest Gathering details.

ATTENTION! Worship Services for Emmaus Candle-light's, Closings, Pilgrim Drop-Off, etc.) will now be at Alpha UMC. See the website for directions.

Spring 2018 Walks
Men's Walk 115:
April 19—22, 2018
Camp Summit

Women's Walk 116:
April 26 –29, 2018
Camp Summit

Chrysalis Flights
Girl's Flight 129:
2018 Date—TDB
Camp Milan

Boy's Flight 130:
2018 Date—TDB
Camp Milan

Emmaus Walks
Held at Camp Summit
3321 57th Ave
New Windsor, IL

Chrysalis Flights
Held at Camp Milan
Milan, IL

Grapevine

QC Emmaus / QC Chrysalis



Greetings from the Community Lay Director

Wow! The last two years have flown by. I want to give thanks and praise to the QC Emmaus Community and the QC Emmaus Board. It has been my pleasure to serve Jesus Christ and the QC Emmaus as your Community Lay Leader. In all honesty it has been a very easy and rewarding experience. So, what makes it easy? Lots of prayer and having an outstanding QC Emmaus Board that wants to serve Jesus Christ along with an incredibly giving QC Emmaus Community. For the last two years we've had eight successful weekends where the face of God and Jesus was present again and again.

When I talk about a giving QC Emmaus Community, this year for the Youth Hope campaign for Camp Summit, the 1st Phase was to double the size of the conference room. The QC Emmaus Community responded in such a way of giving that contributed over **\$20,000** to this project! That is a very giving community. By the way, it looks awesome and the finishing touches are getting completed.

One of our challenges we have is to continue to stay in contact with our QC Emmaus Community. In this ever-changing society of new mobile phone numbers and emails it is very hard for us to keep up. Please know that we have not abandoned this effort in any way. In fact, we are searching for ways to step up this effort.

Next, I want thank Kathy Ramp for saying 'yes', to God's call to be the next QC Emmaus Community Lay Leader. I will be staying on the Board for one more year to assist Kathy, (I really don't think she will need much from me).

With Christmas right around the corner, and the race to get all those gifts bought and wrapped, please don't forget what this season is all about..... JESUS. He is the Reason for the Season.

Blessings, and DeColores!

~**Richard Willard** Community Lay Director Walk #13

New Conference Room



Covered deck off of new conference room



Community Spiritual Director

BIBLE TRIVIA

How many miles did Mary and Joseph walk to get from Nazareth to Bethlehem?

Symbolically, what did the 3 gifts represent given to Jesus by the Magi?

(answers on page 3)



Spring 2018 Walks:

Men's Walk #117

Apr 19–22, 2018

Lay Director—Paul Jaquet

Women's Walk #118

Apr 26–29, 2018

Lay Director—Candy Terrill

Who Should You Sponsor?

Sponsorship applications can be found at www.qcemmaus.org and sent to:

Quad City Conference of Walk to Emmaus
PO Box 971
Moline, IL 61266

Please contact Becky Layman, Emmaus Registrar @ 309-502-9508, or other Emmaus Board members with any questions.

In late October, I was privileged, for the third year, to travel to Nashville, Tenn. to the Upper Room's International Walk to Emmaus Advisory Committee. It is made up of approximately 60 representatives from all over the world. For the third consecutive year, I was humbled by the opportunity to represent the North Central Region. I was the clergy representative for our 10 states, and there was also a lay representative.

What a joy to celebrate all the good things, {and mourn with, and pray for, the not-so-wonderful things} happening to Emmaus Communities all over the world.

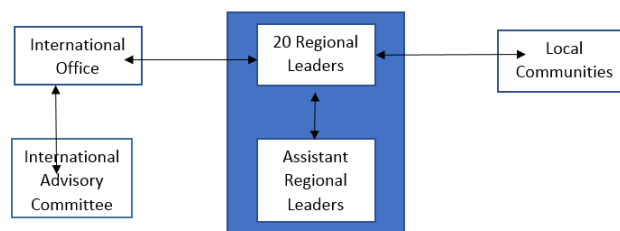
For a number of years, there has been a Clergy and lay representative for each Region, who has been a go-between between the Communities and the Upper Room. Cathi Eberly has been our lay Regional Representative, and Pastor Tom Mattis has been our clergy Regional Rep.

But things are changing. We were informed that a new set of manuals are expected to come out early in 2018. So, every Emmaus / Chrysalis Community in the world will be purchasing sets of these to look at in order to keep up with all the changes.

But, A bigger change is that the 'Regional Representative structure' is being replaced with more people, {than just two} covering the same amount of geographical area as Cathi & Tom have been doing. What has been formerly done by these two persons, will be broken down into FOUR smaller and more specific areas of responsibility. There will be: Communicators, Trainers, Start-Up Teams, & Consultants. Each has its various assigned responsibilities.

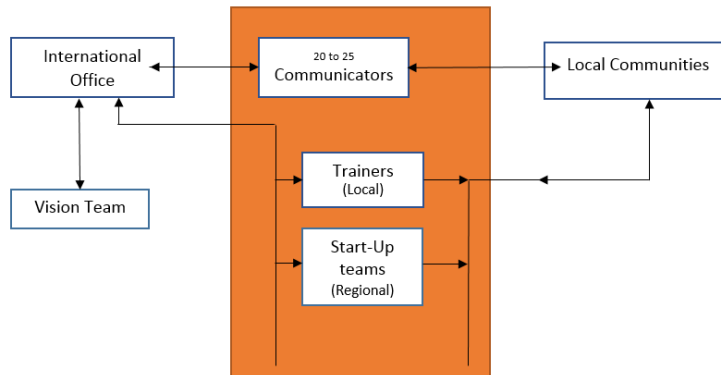
The purpose, as I see it, is to alleviate the current challenge of the two over-worked {current system} people, and, reduce the amount the Upper Room is currently spending keeping in touch with and assisting existing communities, as well as, helping new ones to get 'off-the-ground.'

See diagrams below: [I received this on November 7th, 2017]. This is the current system:



The following diagram illustrates the community support system and its functioning as of January 2018. The team of Regional and Assistant Regional Leaders will be replaced by the new network of these 4 groups: Communicators, Trainers (Community and Start-Up) and Consultants.

Community Spiritual Director, continued



I hope you will join me in praying that this change will help every Emmaus, Chrysalis, Face-to-Face, and Journey to the Table Community around the World, and be a benefit to those Communities, [of all 4 expressions] that are currently on the “drawing board” to be rolled out in the future.

Thanks be to our God for this marvelous instrument called the Walk to Emmaus, Chrysalis, and all the other divisions. May all continue to strengthen the Saints of Christ, as we continue to build and strengthen His Kingdom, until the day He returns.

I’m sure there will be more details shared after the first of the year, which we will pass on here in the Grapevine. Until then...

Blessings of this joyous season to you all,

Pastor Steve Hartman, Community Spiritual Director

Merry Christmas Emmaus & Chrysalis Community!



As we prepare to celebrate the birth of our Lord Jesus Christ may we be in a mindset of love and prayer for those that may be missing a loved one this season, or those that may be spending the holidays alone.

God is so good! Many blessings are happening for the Chrysalis community. I’m happy to report that we have new board members joining in January. Please welcome to the board: Tanner DePaepe, Linda Akers, Katie Noyd, Pam Kelly, and Michael Heesch. We also want to thank those board members who have faithfully served the community and whose terms are officially coming to a close: Carl Roloff and Jeff Gerber.

Please continue to pray for the Chrysalis community and the teams and candidates for 2018. God bless each and every one of you this Christmas. Never forget GOD LOVES YOU.

Fly with Christ,

Kelly Miller Chrysalis Community Lay Director

Trivia answers:

1) Distance from Nazareth to Bethlehem was 80 miles. 2) Gold represents royalty and Jesus’s kingship. Frankincense was used in the temple to express gratitude, a symbol of His priestly role, and myrrh was a perfume used as an anointing oil and used on Jesus when he was taken down from the cross.



Upcoming Chrysalis Flights:

Girl’s Flight 129
2018 Date—TDB
Camp Milan

Boy’s Flight 130:
2018 Date—TDB
Camp Milan

Quad City Walk to Emmaus
P.O. Box 971
Moline, IL 61266
www.qcemmaus.org

Non-Profit Organization
U.S. Postage Paid
Davenport, IA
Permit # 580

Community Lay Director

Rich Willard richardwillard@gmail.com

Secretary & Historian

Patty Axtell pattyaxtell@hotmail.com

Newsletter, Website, Facebook

Cathy Benson Benson4335@msn.com

Treasurer & Manuals

Kurt Streicher vicstre@aol.com

Set up – Take down

Craig Hollenback hollenback.craig@gmail.com

Supplies

Joy Ruhl neiljoyandtheboy@yahoo.com

Registrar

Becky Layman bobelayman@gmail.com

Evangelism/Outreach

Kathy Ramp kdramp@mchsi.com

Caring & Communications

Nathan Skjerseth skjerseth@icloud.com

Reunion Groups & Agape

Pam Hoogerwerf sammysue6@hotmail.com

Community Spiritual Director

Steve Hartman sghartman6512@yahoo.com

Weekend Support, Chrysalis Liaison

Sandy McCready sandy.mccready@pioneer.com

Database

Dave Blair dblairst@gmail.com

Gatherings & Community LD Asst.

Charlie Campbell Charliec33@msn.com

Kitchen Co-Chairs

Pat Thornton psthornton@mmm.com

Rich Smice rsmice@pfgc.com

Team Selection

Carl Loweth carl.loweth@gmail.com

Chrysalis

Kelly Miller MillerKelly@allsteeloffice.com

We're on the Web!

See us at:

www.qcemmaus.org